



Caldaiette - Steam generators

MAXI VAPOR



WWW.FGMC.PRO

Dati Tecnici caldaia:

- tensione 230V-50Hz
- pressione 2,8 Bar
- resist. caldaia 1300W
- resist. ferro 850W
- caldaia in rame
- capacità 3,5 lt
- peso 9,5 Kg.
- dimensioni: 41x27x35h cm

Steam boiler technical features:

- tension 230V-50Hz
- pressure 2,8 Bar
- power (steam boiler) 1300W
- power (steam iron) 850W
- copper boiler
- capacity 3,5 lt
- weight 9,5 Kg.
- sizes: 41 x 27 x 35h cm

Accessori - Accessori



cod. 2708
- ferro di ricambio
- replacement iron



cod. 2707/01
- carrellino
- trolley

Ricambi principali - Main spare parts



cod. 2700/16



cod. 2700/32



cod. 2705/14



cod. 2707/5



cod. 2700/31



cod. 2700/3



cod. 2700/6 (V.T.)
cod. 2769/80 (N.T.)



cod. 2700/37



cod. 2700/42



cod. 2707/48



cod. 2707/4A

AUTOMATIC VAPOR



Dati Tecnici caldaia:

- tensione 230V-50Hz
- pressione 2,8 Bar
- resist. caldaia 900+900W
- resist. ferro 850W
- caldaia in rame
- capacità 2,8 lt
- peso 18 Kg.
- dimensioni: 35x35x85h cm

Steam generator technical features:

- tension 230V-50Hz
- pressure 2,8 Bar
- power (steam boiler) 900+900W
- power (steam iron) 800W
- copper boiler
- capacity 2,8 lt
- weight 18 Kg.
- sizes: 35 x 35 x 85h cm

cod. 2742
- caldaietta 2,8 lt
- 2,8 lt steam generator

Accessori - Accessori



cod. 2708
- ferro di ricambio
- replacement iron

Ricambi principali - Main spare parts



cod. 2700/16



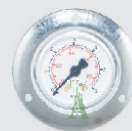
cod. 2700/32



cod. 2700/31



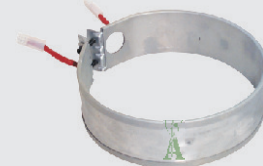
cod. 2705/14



cod. 2707/48



cod. 2742/10



cod. 2700/4



cod. 2700/37



cod. 2700/42



cod. 2700/3



cod. 2700/6 (V.T.)
cod. 2769/80 (N.T.)

