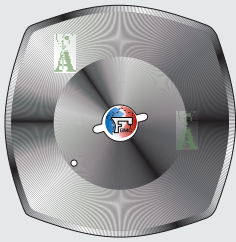


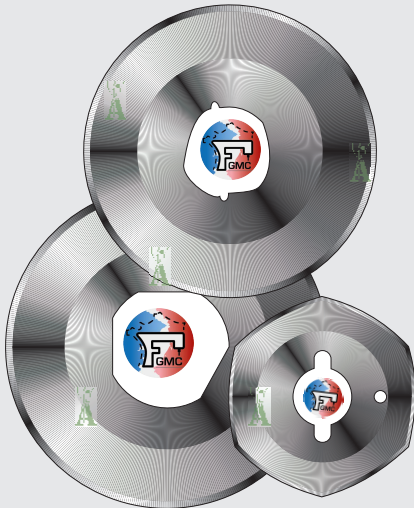


Lame per taglierine rotative - Blades for round cutters



MAFELL

Codice	N° orig.	Modello Model	Forma lama Blade type	ø est. ø out.	ø foro ø hole
9350	-----	-----	4 lati - 4 sides	ø 120	ø 10



MAIMIN

Codice	N° orig.	Modello Model	Forma lama Blade type	ø est. ø out.	ø foro ø hole
9351	-----	MINI-SHERE	circolare - round	ø 50 2"	ø 16X23X3
9352	(30312)	MINI-SHERE	6 lati - 6 sides	ø 50 2"	ø 16X23X3
9353	-----	MINI-SHERE	8 lati - 8 sides	ø 50 2"	ø 16X23X3
9354	(30301)	ROTOSHERE 2	circolare - round	ø 63,6 2 1/2"	ø 21,6
9356	(30303)	Mod. 44, 54, ACDC 4"	circolare - round	ø 101,6 4"	ø 40,0
9358	-----	ACDC 5"	circolare - round	ø 127 5"	ø 40,0
9359	-----	ACDC 5 1/4"	circolare - round	ø 133,5 5 1/4"	ø 40,0
9360	(30307)	Mod. 59, ACDC 5 1/4"	circolare - round	ø 133,5 5 1/4"	ø 51,8
9362	(30310)	Mod. 86, ACDC 6"	circolare - round	ø 152,5 6"	ø 58,2
9364	(30311)	Mod. 87, ACDC 7"	circolare - round	ø 178 7"	ø 58,2

RASOR

Codice	N° orig.	Modello Model	Forma lama Blade type	ø est. ø out.	ø foro ø hole
9377	(50C)	DS50-501, PN50, FP50	circolare - round	ø 50	ø 12,0
9380	(50S)	DS50-501, PN50, FP50	7 lati - 7 sides	ø 50	ø 12,0
9381	HSS	DS50-501, PN50, FP50	7 lati - 7 sides	ø 50	ø 12,0
9388	(86C)	D86	circolare - round	ø 86	ø 22,4
9389	(86P)	DS86	4 lati - 4 sides	ø 86	ø 22,4
9382	(10C)	D100E, SW100	circolare - round	ø 100	ø 22,4
9383	(10S)	D100	4 lati - 4 sides	ø 100	ø 22,4
9386	-----	D100S, SW100	6 lati - 6 sides	ø 100	ø 22,4

WWW.FGMC.PRO

RASOR (originali - genuine)

Codice	Modello Model	Forma lama Blade type	ø est. ø out.	ø foro ø hole
50SEXT	DS50, DS501, DS502, PN50, FP50, FP501	7 lati - 7 sides	ø 50	ø 12,0
50SEXTG	DS50, DS501, DS502, PN50, FP50, FP501	7 lati - 7 sides	ø 50	ø 12,0
503CHSS	DS503, DS504, NERA, FP503	circolare - round	ø 50	ø 12,6
503EEXT	DS503, DS504, NERA, FP503	6 lati - 6 sides	ø 50	ø 12,6
503EHSS	DS503, DS504, NERA, FP503	6 lati - 6 sides	ø 50	ø 12,6
503DHSS	DS503, DS504, NERA, FP503	8 lati - 8 sides	ø 50	ø 12,6
70CHSS	OPTIMA 703, ZERO 702, FP702	circolare - round	ø 70	ø
70SHSS	OPTIMA 703, ZERO 702, FP702	4 lati - 4 sides	ø 70	ø
70EHSS	OPTIMA 703, ZERO 702, FP702	6 lati - 6 sides	ø 70	ø
70DHSS	OPTIMA 703, ZERO 702, FP702	8 lati - 8 sides	ø 70	ø
86CHSS	D86P2, D86PS2, FP861, FP862	circolare - round	ø 86	ø
86PHSS	D86P2, D86PS2, FP861, FP862	5 lati - 5 sides	ø 86	ø
86THSS	D86P2, D86PS2, FP861, FP862	8 lati - 8 sides	ø 86	ø
10CEXTG	D100	circolare - round	ø 100	ø 22,4
10CGHSS	D100	circolare - round	ø 100	ø 22,4
10CSW	SW100, FP100	circolare - round	ø 100	ø 22,4
10SEXTG	SW100, FP100	4 lati - 4 sides	ø 100	ø 22,4
10EHSS	SW100, FP100	6 lati - 6 sides	ø 100	ø 22,4
12CHSS	SW12, SW12M, SW12S, FP120M	circolare - round	ø 120	ø 30,0
12SHSS	SW12, SW12M, SW12S, FP120M	ø 120	ø 120	ø 30,0