

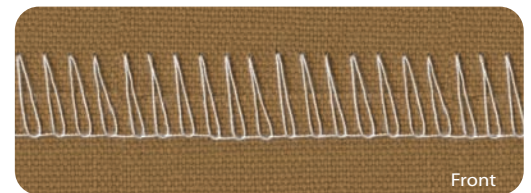
A SOLUTION FOR:

CONTINUOUS PROCESSING

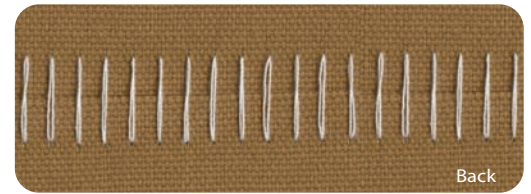


MERROW 70-D3B-2 RAIL SPECIFICATIONS

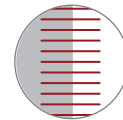
OPERATING SPEED:	2250 rpm
STANDARD STITCH ECCENTRIC :	6 spi
STITCH ECCENTRIC RANGE :	4-12 spi
STANDARD NEEDLE :	8SDT
NEEDLE RANGE:	3SDT - 8SDT
STITCH TYPE	501
STITCH WIDTH :	5/8" (16mm)
NUMBER OF THREADS	1



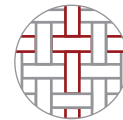
Front



Back



BUTTED
SEAM



WOVENS



RAIL

70-D3B-2 RAIL | BUTTED SEAM MACHINE

Industrial Sewing Machine for Automated or Semi-Automated Sewing

- Specifically Designed for a Railway System
- Ideal for Wide Materials in Production Lines
- Ideal when Straight and Square Seams are Essential
- Sews a Wide Variety of Materials
- 10 Year Warranty
- **Designed and Engineered in the U.S.A.**
- **Parts and Service Available in 65 Countries**
- For More Information Visit www.merrow.com

CLASS

MODEL

OPTION

70 - D3B - 2

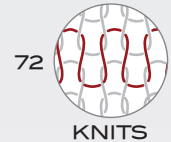
RAIL

STYLE

MERROW has the Widest Variety of Sewing Machines for End-to-End Seaming.



70

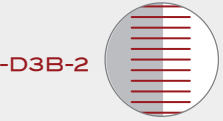


72

CLASS

STYLE

OPTION



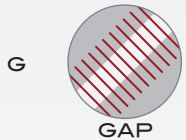
BUTTED SEAM

Machine produces a flat, one-thread butted seam (standard configuration).



STITCH MULTIPLIER

Machine is designed with a non-differential mechanism for increasing the stitch count, particularly at selvages.



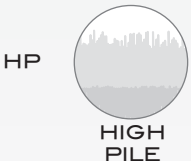
GAP

Machine creates a gap between the joined ends of the fabric.



ROLL

Machine creates a rolled seam at joined ends of fabric.



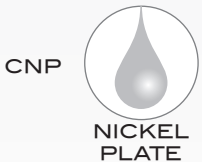
HIGH PILE

Machine is engineered for use on high pile fabric.



2-THREAD

Two-thread locked stitch machine.



NICKEL PLATE

Machine is chemically nickel plated for use in wet and harsh environments; extreme corrosion resistance.



RAIL

Machine is designed to be mounted on a railway sewing system.

	70	72
BUTTED SEAM	■	■
STITCH MULTIPLIER	■	■
GAP	■	■
ROLL	■	■
HIGH PILE	■	■
2-THREAD	■	■
NICKEL PLATE	■	■
RAIL	■	

MERROW[®]
SEWING MACHINE COMPANY

502 BEDFORD STREET
FALL RIVER, MA 02720 USA
1001.800.431.6677
WWW.MERROW.COM

- Denotes Styles/Options that are INCLUDED on this Model
- Denotes Styles/Options that are AVAILABLE for each Machine Class